

Fantazia of 2 p[ar]ts to the Organ For the Violin

GEORGE JEFFREYS

Edited by Jonathan Wainwright

Organ

Musical notation for the Organ part, measures 1-6. The key signature is two sharps (F# and C#) and the time signature is common time (C). The notation is written on a grand staff with a treble and bass clef. The first measure has a whole note in the treble and a whole rest in the bass. The second measure has a half note in the treble and a half note in the bass. The third measure has a half note in the treble and a half note in the bass. The fourth measure has a half note in the treble and a half note in the bass. The fifth measure has a half note in the treble and a half note in the bass. The sixth measure has a half note in the treble and a half note in the bass.

7

Musical notation for the Organ part, measures 7-12. The key signature is two sharps (F# and C#) and the time signature is common time (C). The notation is written on a grand staff with a treble and bass clef. The first measure has a half note in the treble and a half note in the bass. The second measure has a half note in the treble and a half note in the bass. The third measure has a half note in the treble and a half note in the bass. The fourth measure has a half note in the treble and a half note in the bass. The fifth measure has a half note in the treble and a half note in the bass. The sixth measure has a half note in the treble and a half note in the bass.

13

Musical notation for the Organ part, measures 13-18. The key signature is two sharps (F# and C#) and the time signature is common time (C). The notation is written on a grand staff with a treble and bass clef. The first measure has a half note in the treble and a half note in the bass. The second measure has a half note in the treble and a half note in the bass. The third measure has a half note in the treble and a half note in the bass. The fourth measure has a half note in the treble and a half note in the bass. The fifth measure has a half note in the treble and a half note in the bass. The sixth measure has a half note in the treble and a half note in the bass.

19

Musical notation for the Organ part, measures 19-24. The key signature is two sharps (F# and C#) and the time signature is common time (C). The notation is written on a grand staff with a treble and bass clef. The first measure has a half note in the treble and a half note in the bass. The second measure has a half note in the treble and a half note in the bass. The third measure has a half note in the treble and a half note in the bass. The fourth measure has a half note in the treble and a half note in the bass. The fifth measure has a half note in the treble and a half note in the bass. The sixth measure has a half note in the treble and a half note in the bass.

25

Musical notation for the Organ part, measures 25-30. The key signature is two sharps (F# and C#) and the time signature is common time (C). The notation is written on a grand staff with a treble and bass clef. The first measure has a half note in the treble and a half note in the bass. The second measure has a half note in the treble and a half note in the bass. The third measure has a half note in the treble and a half note in the bass. The fourth measure has a half note in the treble and a half note in the bass. The fifth measure has a half note in the treble and a half note in the bass. The sixth measure has a half note in the treble and a half note in the bass.

30

System 1 (Measures 30-34): The music is in D major (two sharps). The right hand features a melodic line with eighth and sixteenth notes, while the left hand provides a steady eighth-note accompaniment. Measure 34 includes a whole rest in the right hand.

35

System 2 (Measures 35-39): The right hand continues the melodic development with some sustained notes. The left hand maintains the eighth-note accompaniment. Measure 39 ends with a half note in the right hand.

40

System 3 (Measures 40-45): The right hand has a more active melodic line with eighth notes. The left hand continues the eighth-note accompaniment. Measure 45 concludes the system with a whole note in the right hand.

46

System 4 (Measures 46-51): The right hand features a long, flowing melodic line with a slur. The left hand continues the eighth-note accompaniment. Measure 51 ends with a half note in the right hand.

52

System 5 (Measures 52-56): The right hand continues the melodic line. The left hand features a long, flowing accompaniment line with a slur. Measure 56 ends with a half note in the right hand.

57



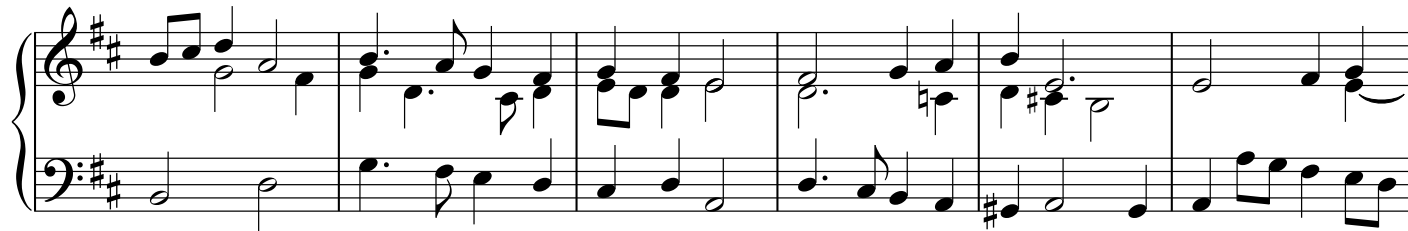
63



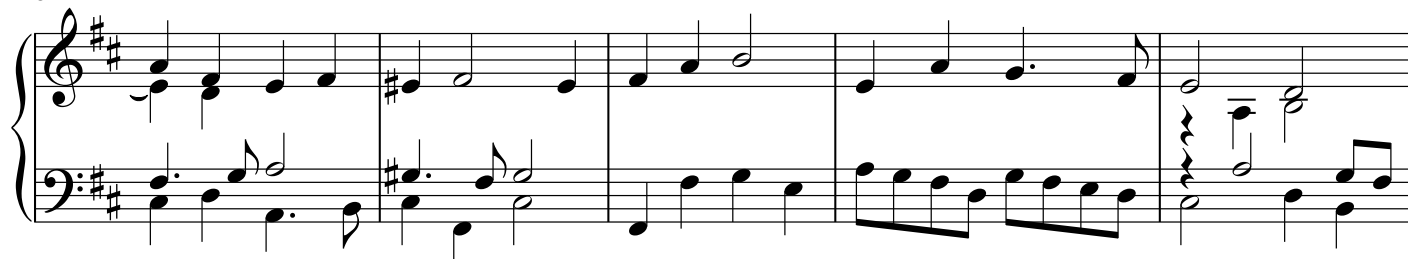
69



75



81



86

Measures 86-91 of a musical score in D major (two sharps). The score is written for piano with a grand staff. Measure 86 starts with a treble clef and a key signature of two sharps. The melody in the treble clef consists of quarter notes: D4, E4, F#4, G4, A4, B4, C5, D5. The bass line in the bass clef consists of quarter notes: D3, E3, F#3, G3, A3, B3, C4, D4. Measures 87-91 continue the melody and bass line with various rhythmic patterns and accidentals.

92

Measures 92-95 of a musical score in D major. The score is written for piano with a grand staff. Measure 92 starts with a treble clef and a key signature of two sharps. The melody in the treble clef consists of quarter notes: D4, E4, F#4, G4, A4, B4, C5, D5. The bass line in the bass clef consists of quarter notes: D3, E3, F#3, G3, A3, B3, C4, D4. Measures 93-95 continue the melody and bass line with various rhythmic patterns and accidentals.

96

Measures 96-100 of a musical score in D major. The score is written for piano with a grand staff. Measure 96 starts with a treble clef and a key signature of two sharps. The melody in the treble clef consists of quarter notes: D4, E4, F#4, G4, A4, B4, C5, D5. The bass line in the bass clef consists of quarter notes: D3, E3, F#3, G3, A3, B3, C4, D4. Measures 97-100 continue the melody and bass line with various rhythmic patterns and accidentals.